

# EPIGAP Optronik GmbH

Koepenicker Str. 325b  
 D-12555 Berlin  
 Fon: +49 (0)30 657637 60  
 Fax: +49 (0)30 657637 70  
 sales@epigap-optronic.de



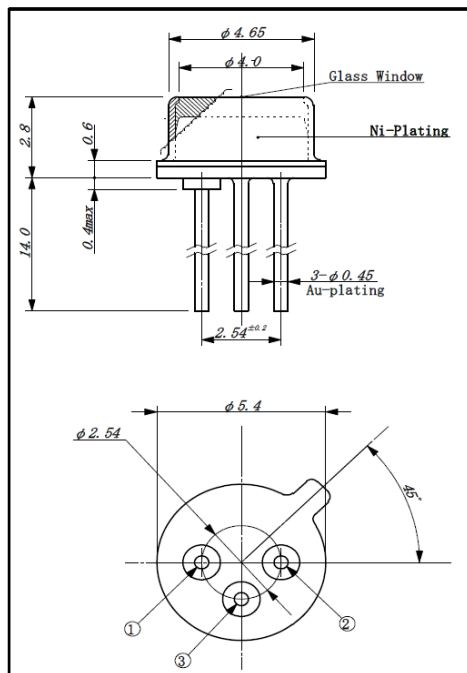
## Data Sheet

### Infrared photodiode

### EOPD-1300-0-0.8-1

Rev. 02, 2016

Spectral range	Type	Case
Infrared	PIN - InGaAs	TO-46 metal can, glass window cap



①Case ②Cathode ③Anode

#### Features:

- High speed response (max. 1 Gbps)
- High reliability
- High sensitivity

#### Applications:

- High speed optical communications
- Optical LAN
- Optical switches
- Ethernet fiber channel

All dimensions in mm, tolerance:  $\pm 0.2$

#### Electro-optical characteristics:

$T_{amb} = 25^{\circ}\text{C}$ , unless otherwise specified

Parameters	Symbol	Min	Typ	Max	Unit	Test conditions
Active area size			$\varnothing 0.8$		mm	
Sensitivity range	$\lambda$	800		1750	nm	$V_R = 0\text{ V}$
Dark current	$I_D$			2	$\mu\text{A}$	$V_R = 2\text{ V}$
Junction capacitance	$C_j$		45		pF	$V_R = 0\text{ V}$
Photocurrent @ 1300 nm	$I_{PH}$		130		$\mu\text{A}$	$V_R = 5\text{ V}$ , $E_e = 1\text{ mW/cm}^2$
Breakdown voltage	$V_{BR}$	5			V	$I_R = 10\ \mu\text{A}$

#### Absolute maximum ratings

Parameters	Min	Max	Unit
Operating temperature	-40	+85	$^{\circ}\text{C}$
Storage temperature	-40	+125	$^{\circ}\text{C}$

Art. No. 143 050



We reserve the right to make changes to improve technical design and may do so without further notice. Parameters can vary in different applications. All operating parameters must be validated for each customer application by the customer.