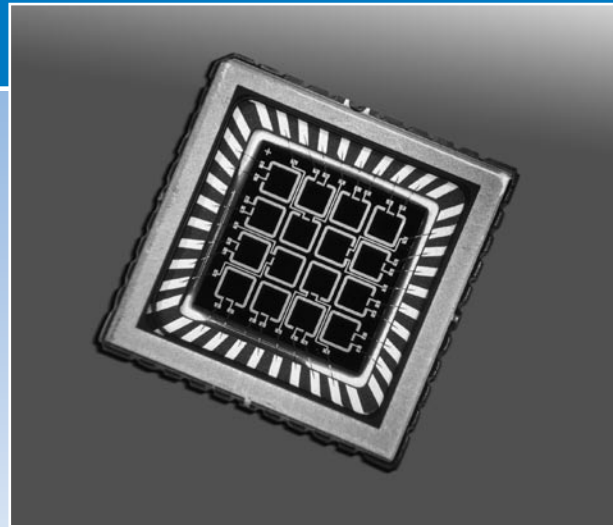


UDT-4X4D

4X4 Silicon Array Detector

The UDT-4X4D is a 4 by 4 array of superblue enhanced Photodetectors. Our proprietary design provides virtually complete isolation between all of the 16 elements. The standard LCC package allows easy integration into your surface mount applications. Numerous applications include Ratio and Scattering measurements, as well as Position Sensing. For custom packages, special electro-optic requirements, or to order these parts in die form, please contact our Applications group.



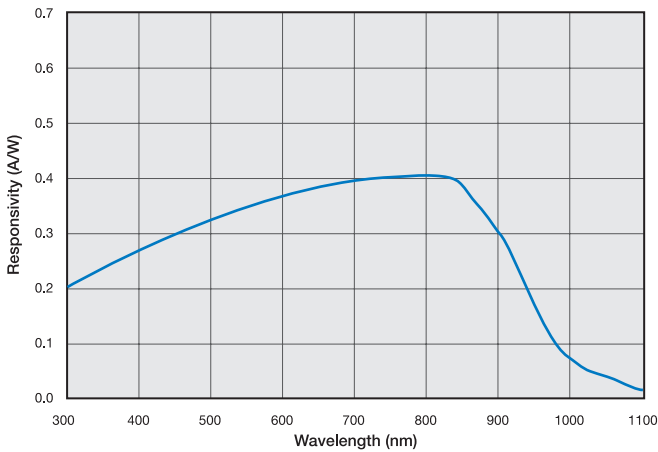
APPLICATIONS

- Scattering Measurements
- Position Sensing

FEATURES

- Speedy Response
- Extremely Low Cross-talk
- Surface Mount Design

Typical Spectral Response



Model Number	Active Area		Peak Responsivity Wavelength	Responsivity (A/W)		Capacitance (pF)	Shunt Resistance (GΩ)		NEP (W/√Hz)	Crosstalk	Temp. Range (°C)		Package Style ¶
	Area (mm²)	Dimensions (mm)		λp nm	633nm		0 V				0 V 810nm	0 V 633nm	
			typ.		min.	typ.	typ.	typ.	min.	typ.			
4 x 4 Array Detector (Super-Blue Enhanced)													
UDT-4X4D	1.0	1.0 x 1.0	810	0.35	0.40	35pF	1.0	0.01	1.0 e-14	0.02%	-20 ~ +60	-20 ~ +80	Ceramic LCC

- Non-condensing temperature and storage range, Non-condensing environment.
- All Electro-Optical specifications are given on a per element basis.

Mechanical Specifications

All units in inches.

